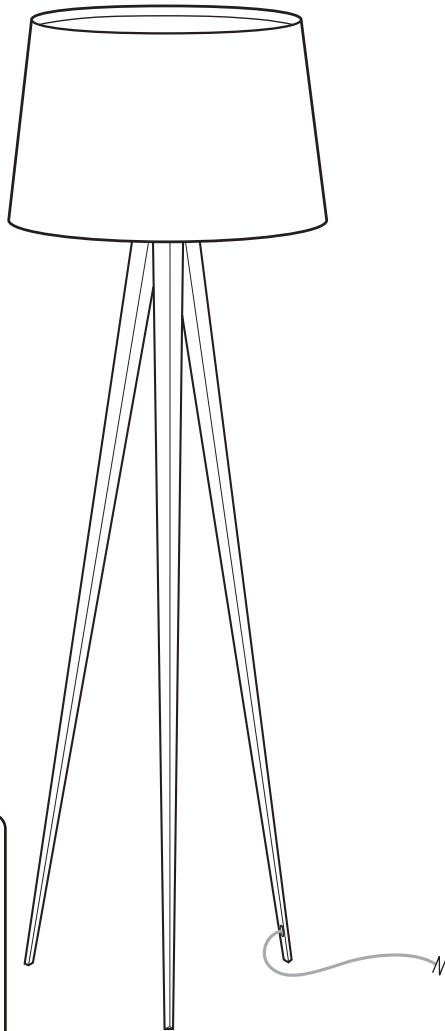


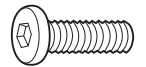
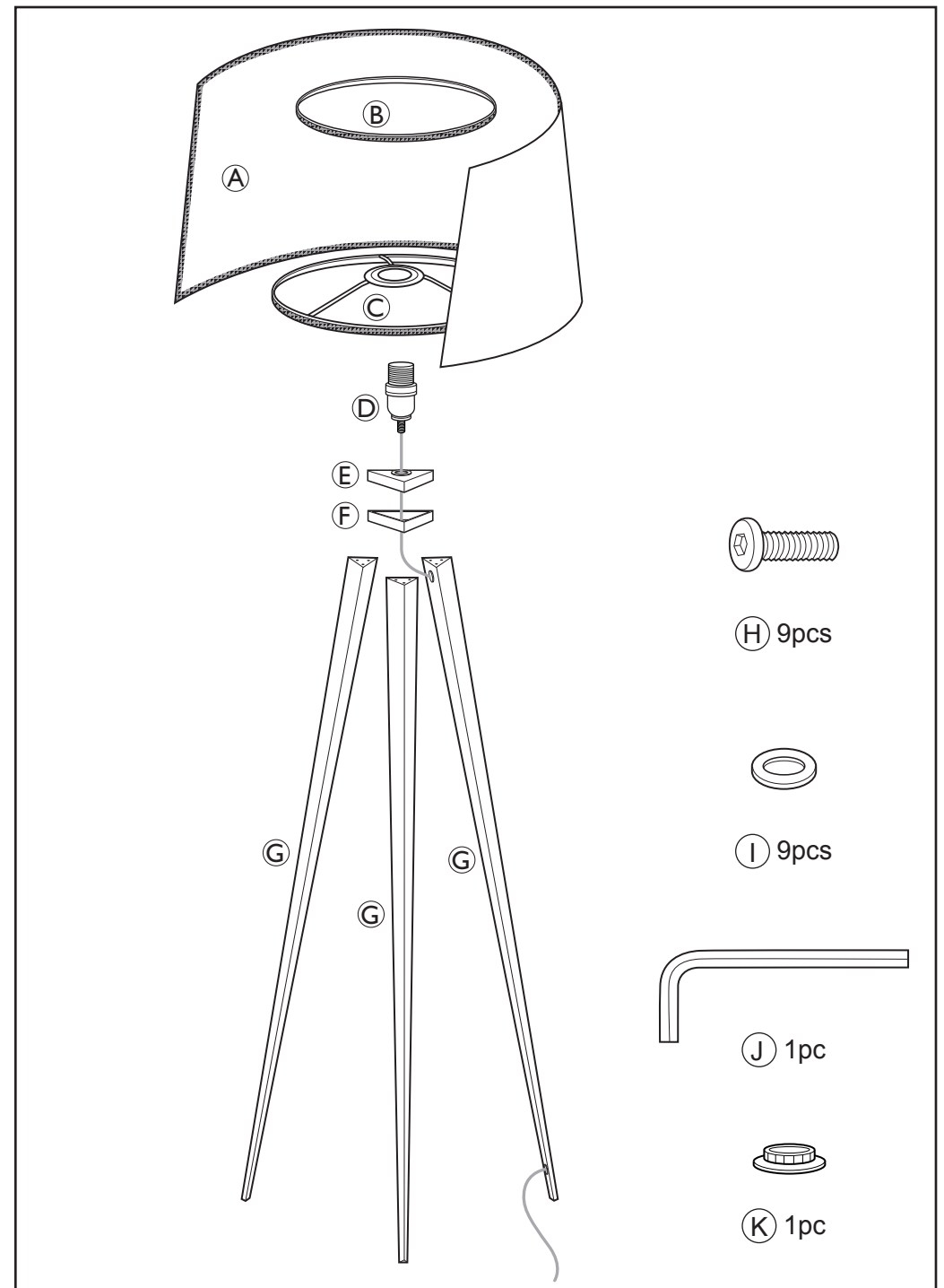
# aromas ASSEMBLY INSTRUCTIONS

PI184



LAMPSHADE patent  
USA: US 8,292,476  
China: ZL200820000799.4  
EU: 2098777/2988456  
DE/FR/NL: EP2098777  
Japan: 3145825  
Taiwan: M350672

**Caution :** If the external flexible cable or cord of this luminaire is damaged, it should be replaced by a qualified person in order to avoid a hazard.



(H) 9pcs



(I) 9pcs

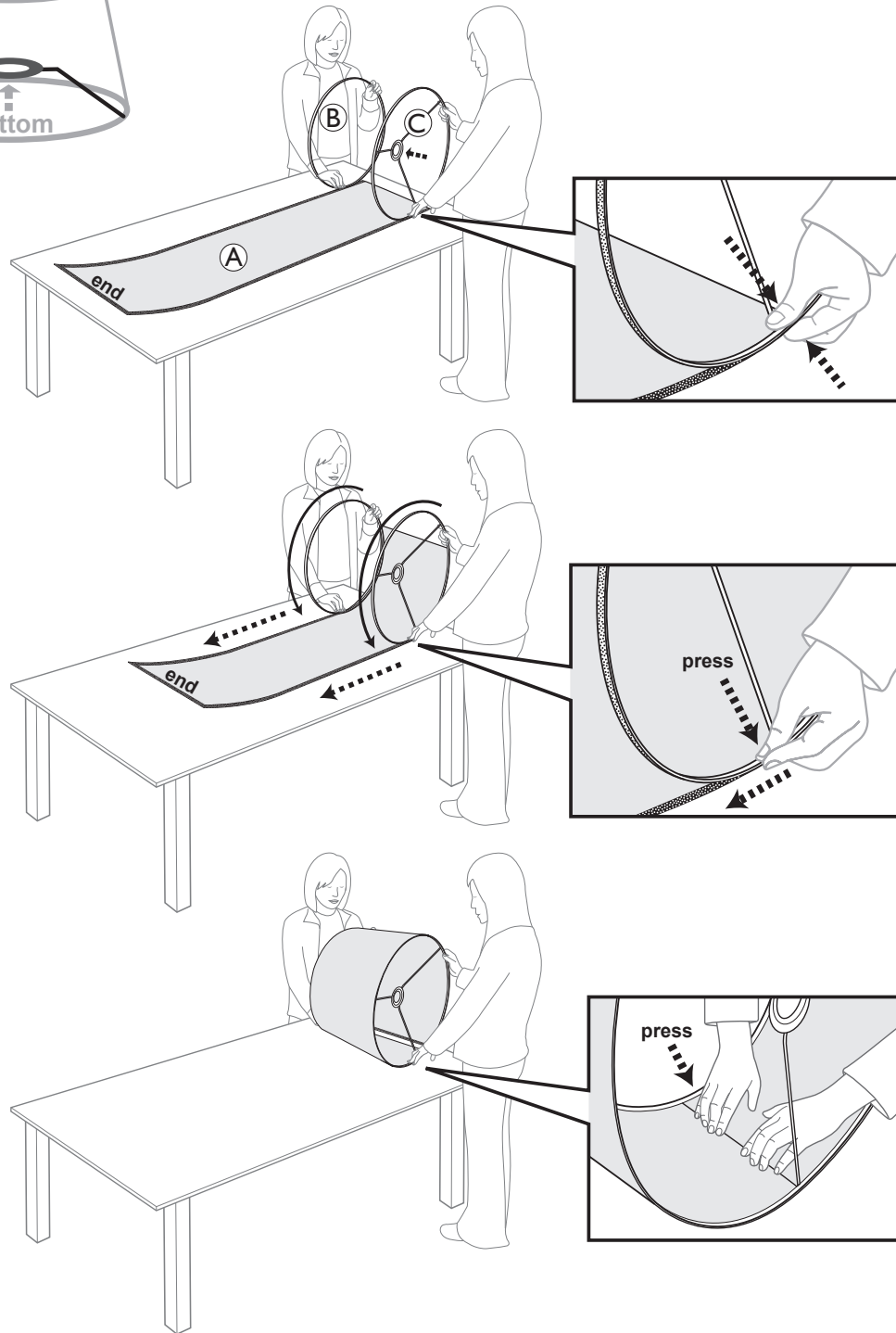
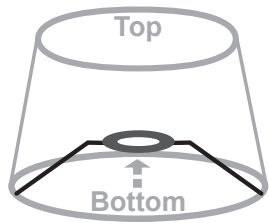


(J) 1pc

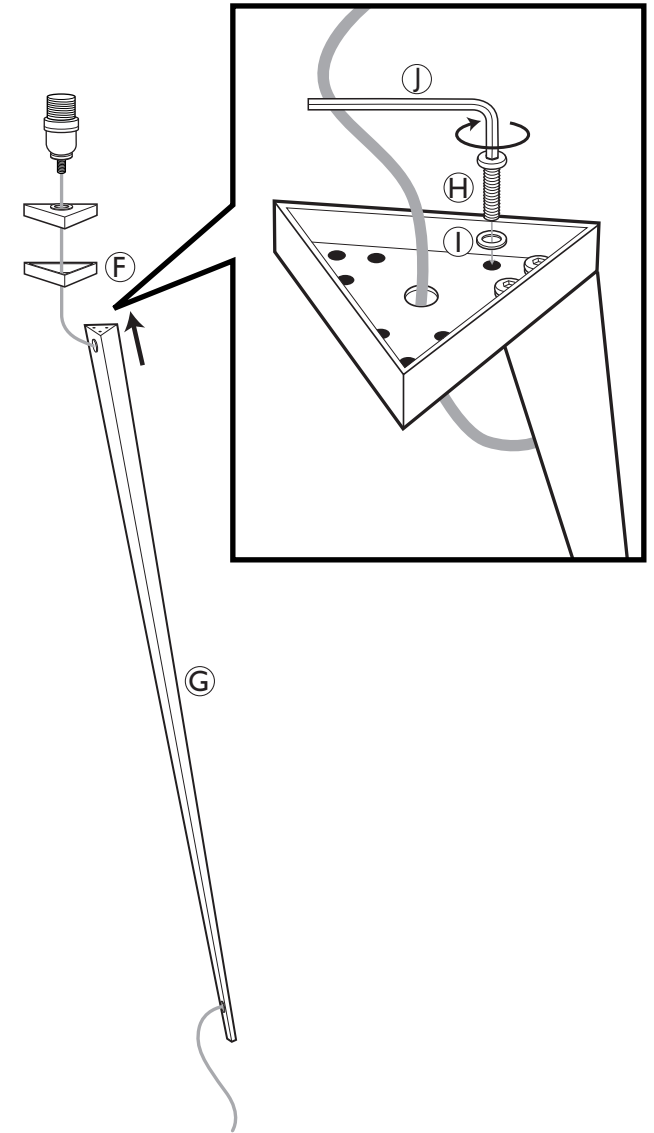


(K) 1pc

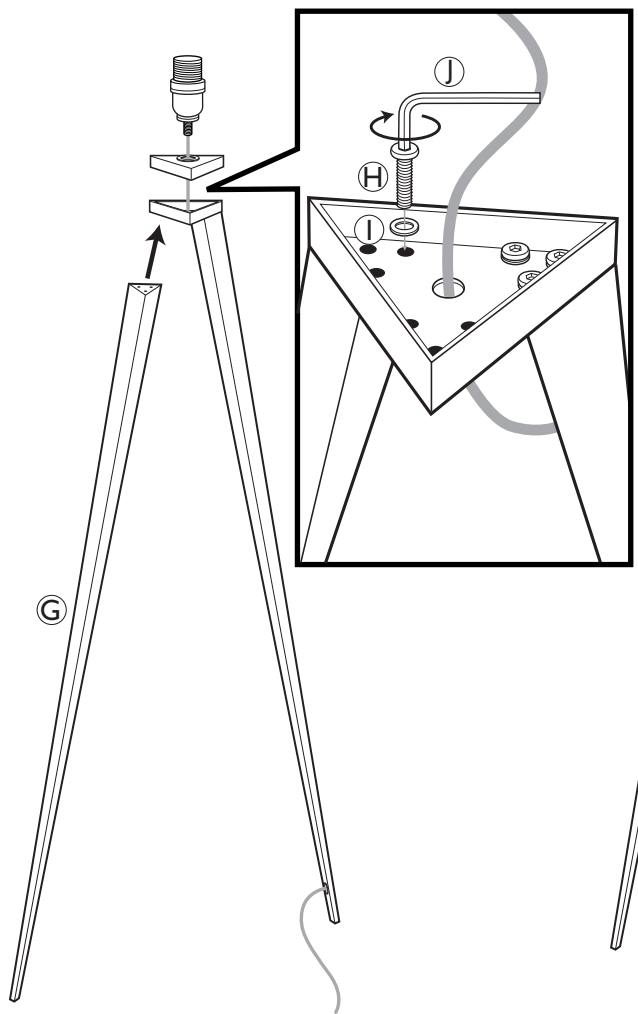
1



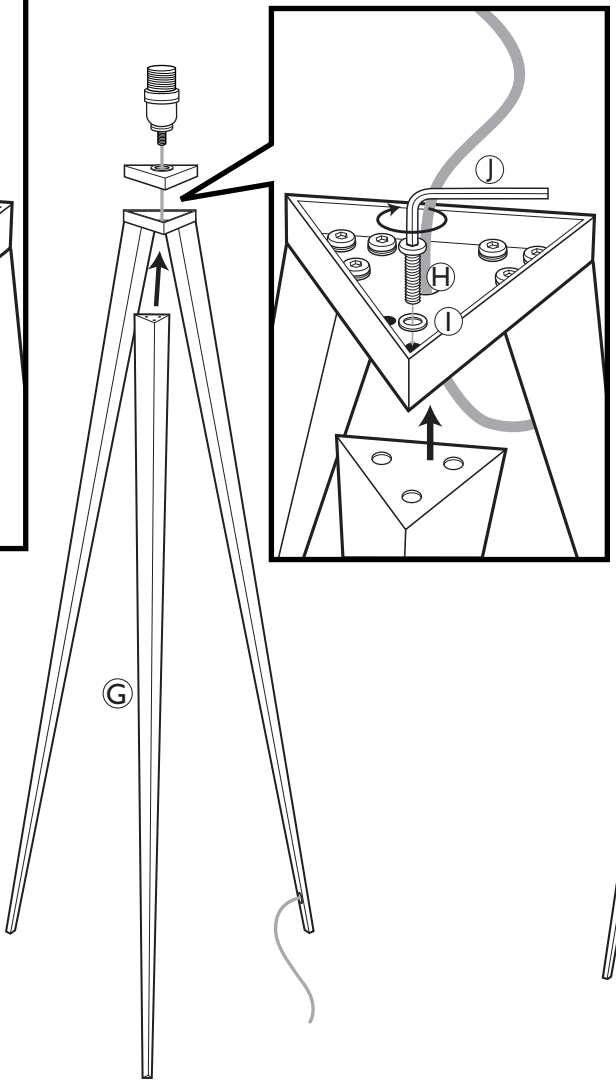
2



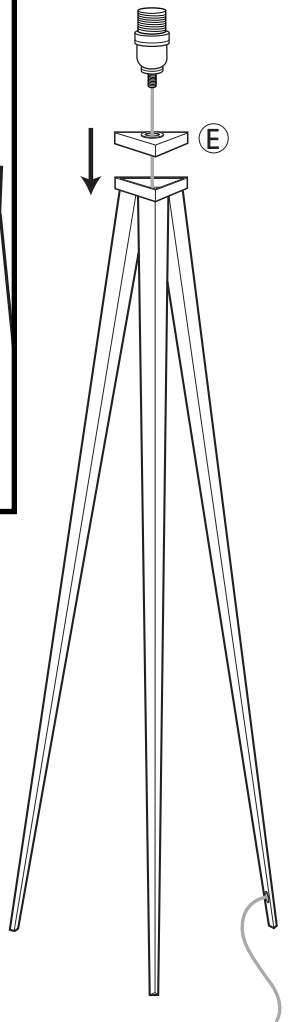
3



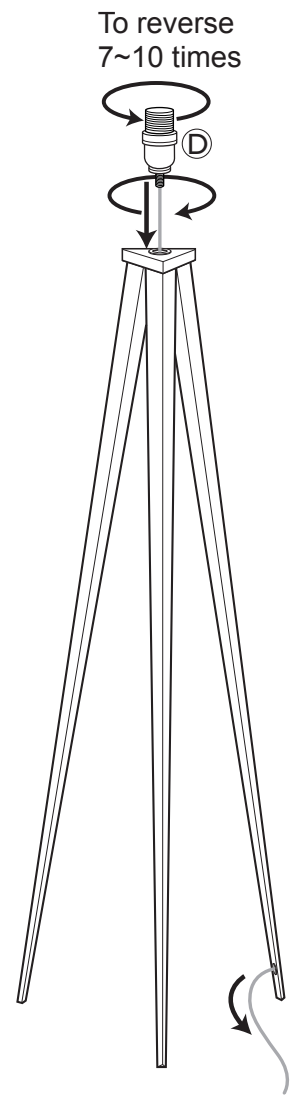
4



5



6



7

